

The Hidden Treasure

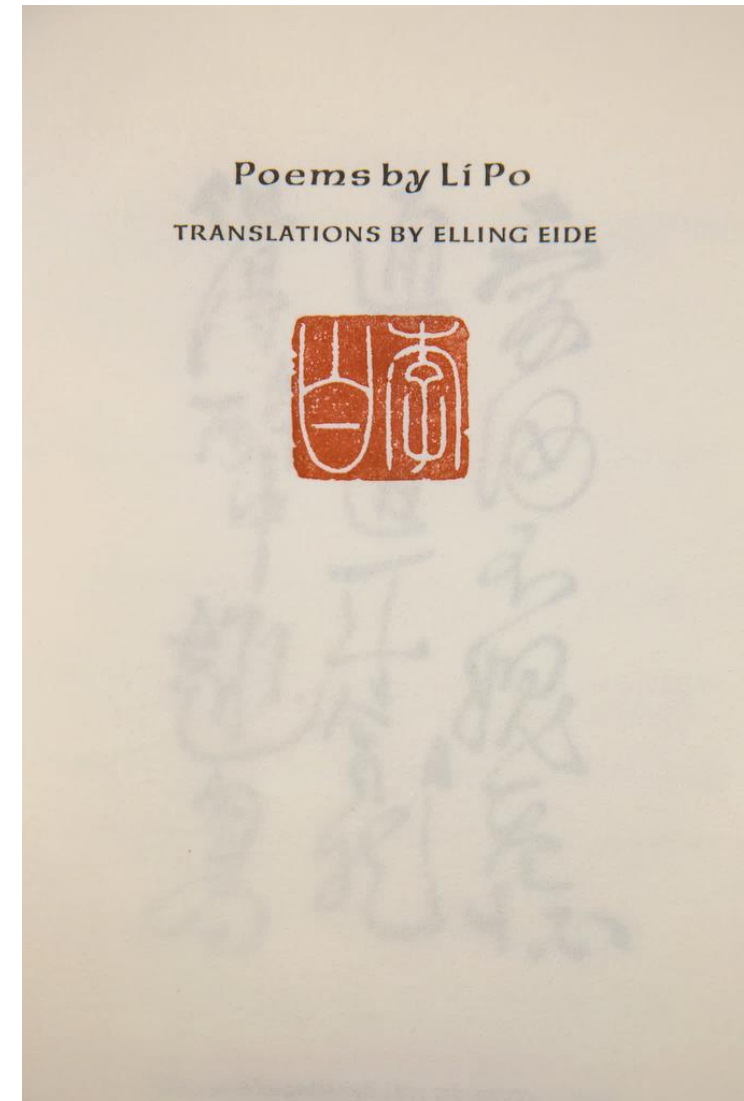
— Elling Eide Center
Research Library ■ Preserve

Zhao Liu
September 23, 2016
CALA Fall Program, Orlando



Mr. Elling O. Eide (1938-2012)

- Harvard Graduate in 1957 with a degree in East Asian Language and Culture
- Junior Fellow
- Assistant Professor in Chinese literature at the University of Illinois, Urbana-Champaign
- Chinese Literature and Language
- Li Po (Li Bai 李白 Tang Poet 701-762CE) and his poems
- Academic Interest: Chinese literature, Chinese religion, and Inner Asia studies



Translation on Li Po's poem by Elling O Eide, 1984

The Building



Designed by Sarasota based architect **Guy Peterson, FAIA**

- Two levels
- 17,000 square feet air-conditioned space





The Library



Library Entrance with RFID (Radio Frequency Identification) security System



Main Reading Room

- Spacious reading room





2nd Floor: Main Stack reading room





Rolling Hand Crank Storage Shelves for Art Books



High Density Storage Shelves
—Main Stack



The Collection

- 60,000 volumes in multiple languages
- 15,000 thread-binding volumes



Rare Book Room

- * 280 titles Rare books in Western Languages
- * 38 titles in Chinese, the earliest Fragment from 10th century
- * 20 titles Chinese Stone Rubbing

SPTK Sets

- Three sets of Chinese Classics, published in 1921-1933



The Book

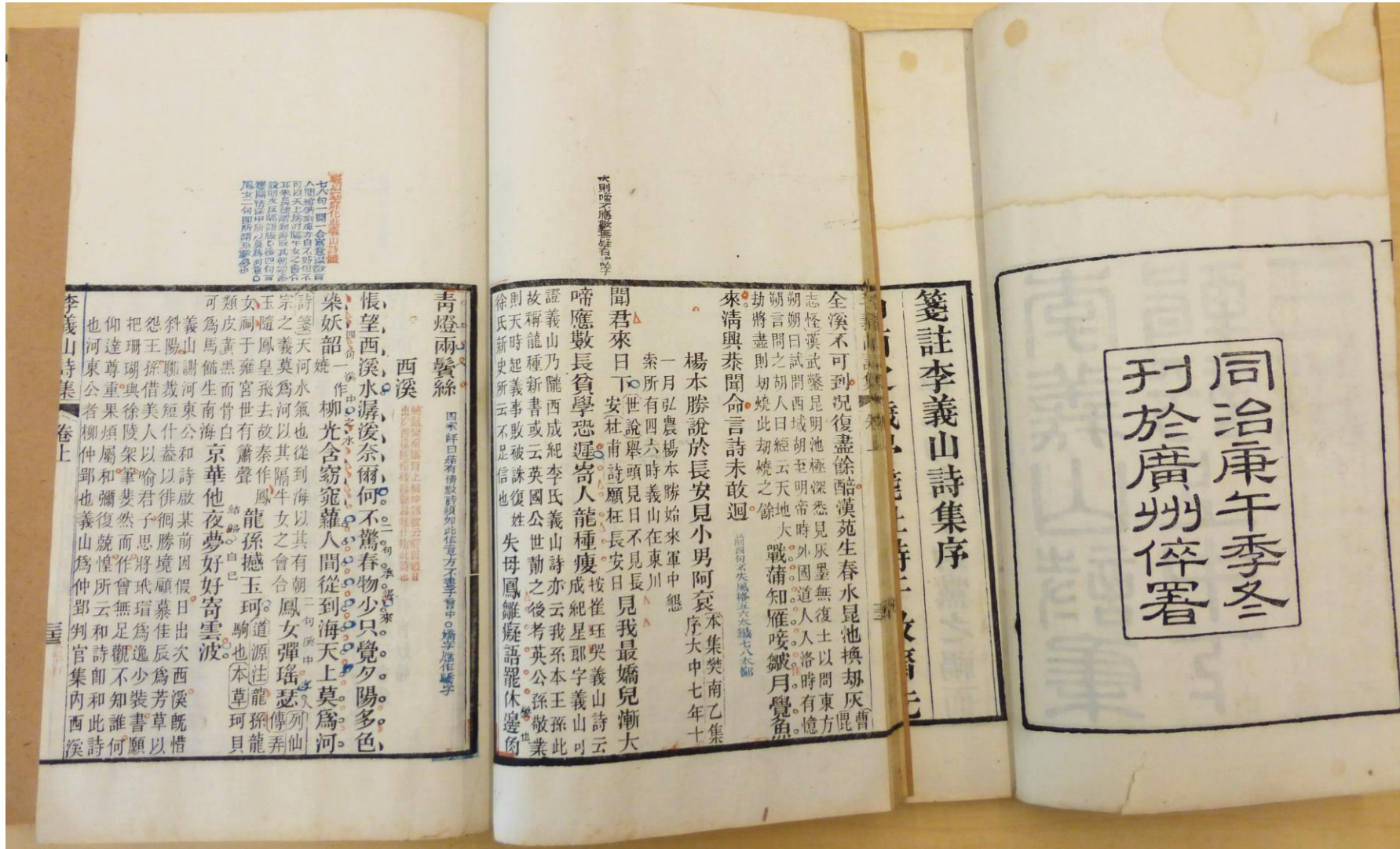


Commentary on Li Bai and Du Fu's poems

Ming Dynasty Woodblock Print Book, 1599

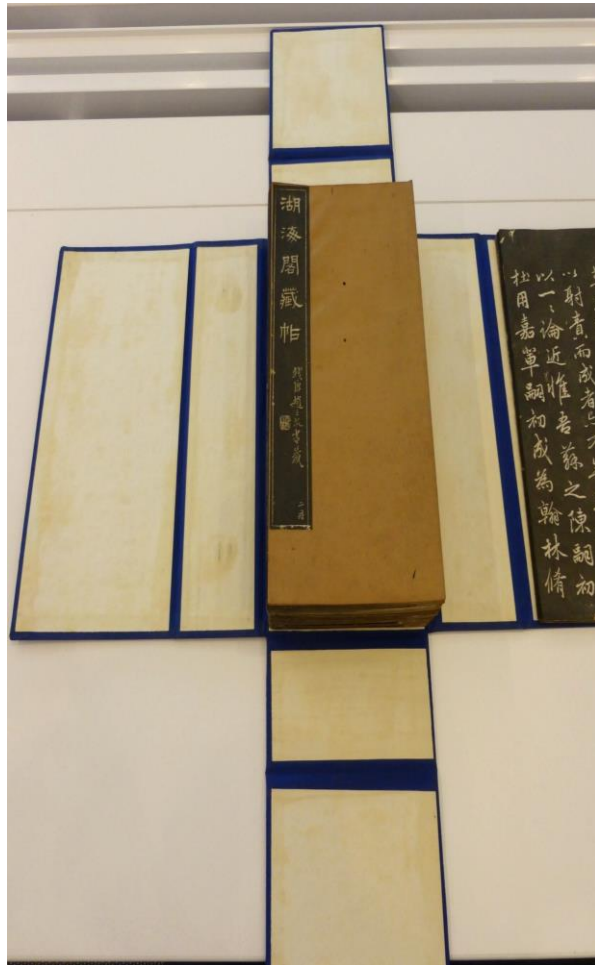
- Provenance: Fujiwara Seika (1561-1619) – a Japanese neo-Confucian philosopher in the Edo Period (1603-1868)

The Book

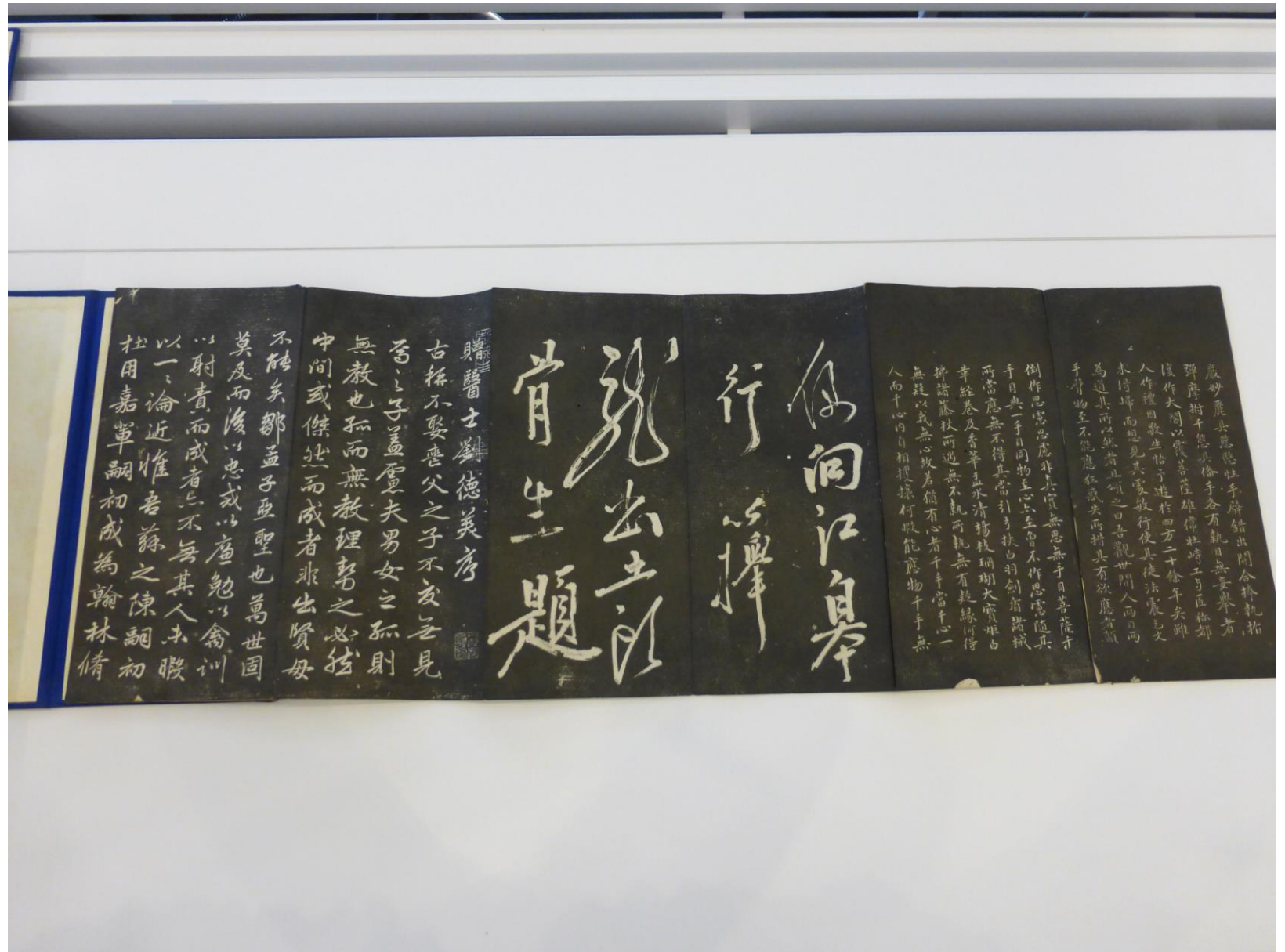


Commentary on Li Shangyin's (813-858) Poem
Three colors woodblock print book, 1870

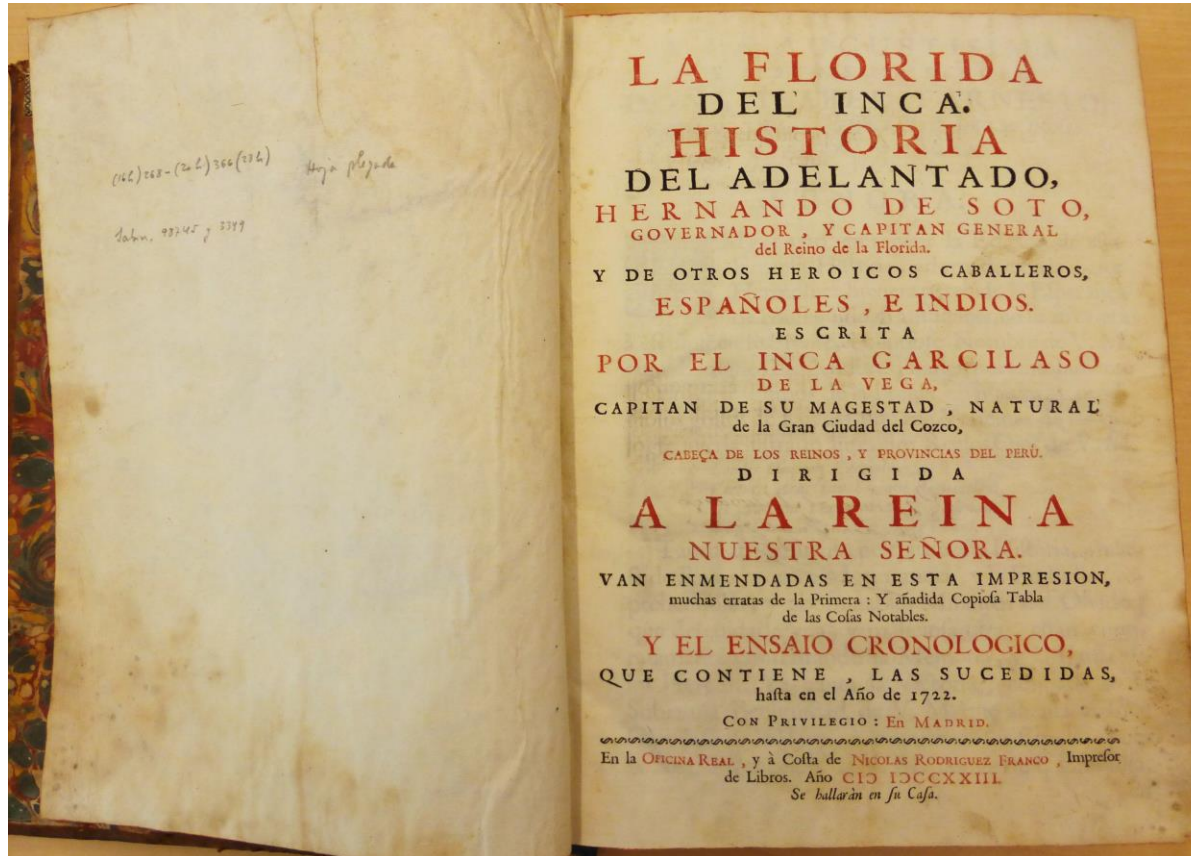
The Book



Huhai Library Calligraphy
Collection
Chinese Rubbing,
1880
湖海閣藏帖8卷



The Book

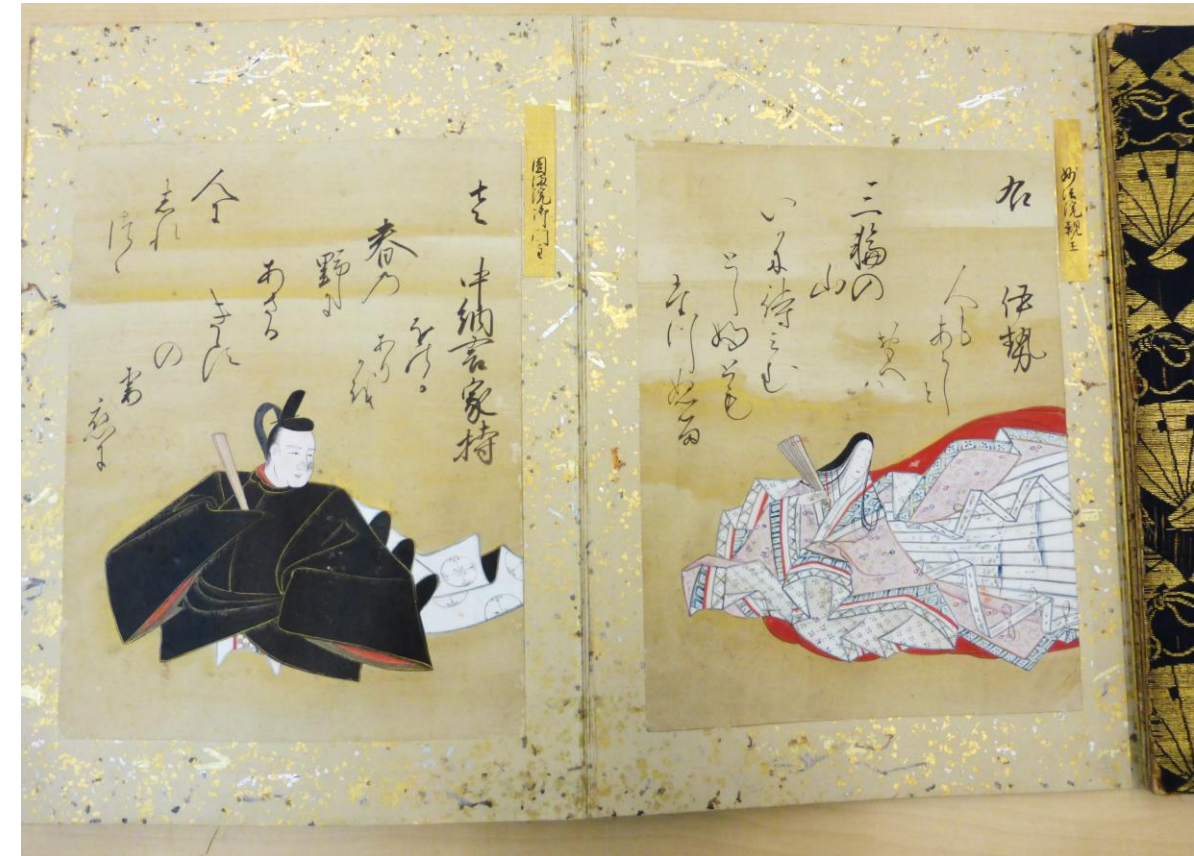


La Florida del Inca. Historia del adelantado, Hernando de Soto, gobernador, y capitan general del Reino de la Florida.

El Inca Garcilaso de la Vega (1539-1616)

Madrid, 1723

- Original published in Lisbon in 1605.
- Unique Amerindian and European perspectives on the de Soto expedition (1539-1543)
- Focus on the Spanish experiences in the New World and presenting what the Native Americans had been, were, and could become

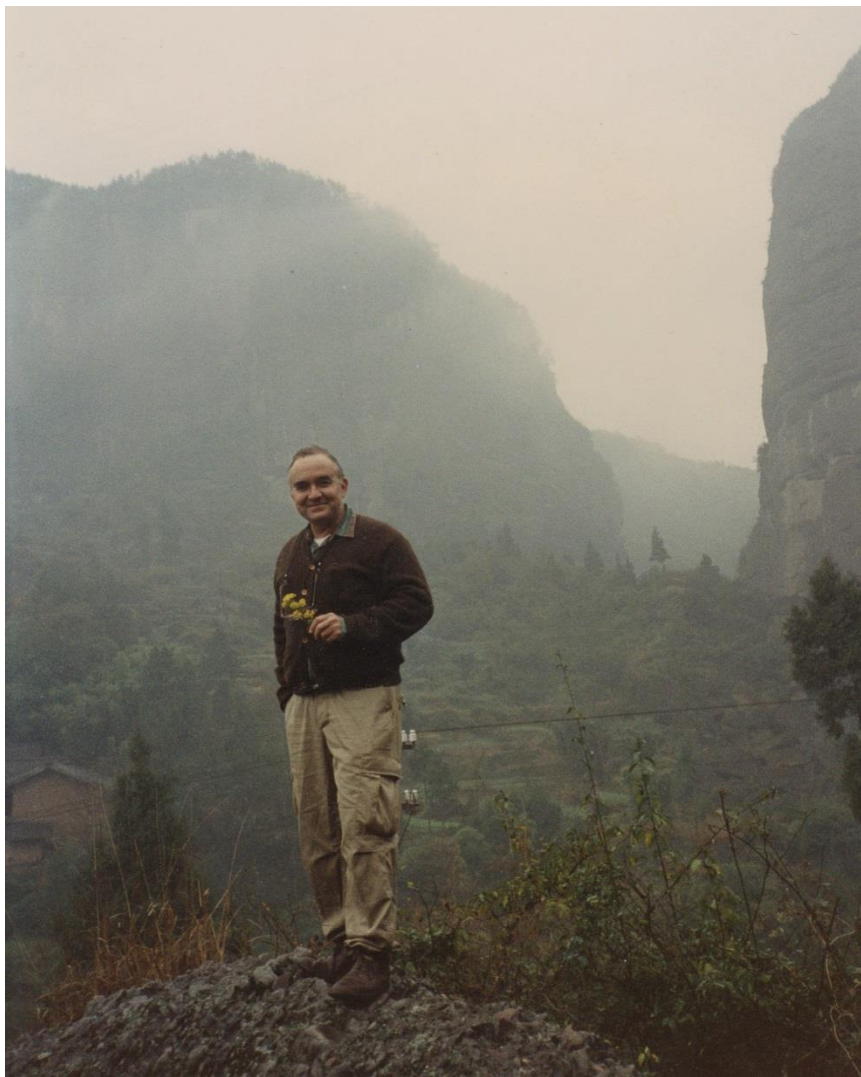


Thirty-six Immortal Kanse

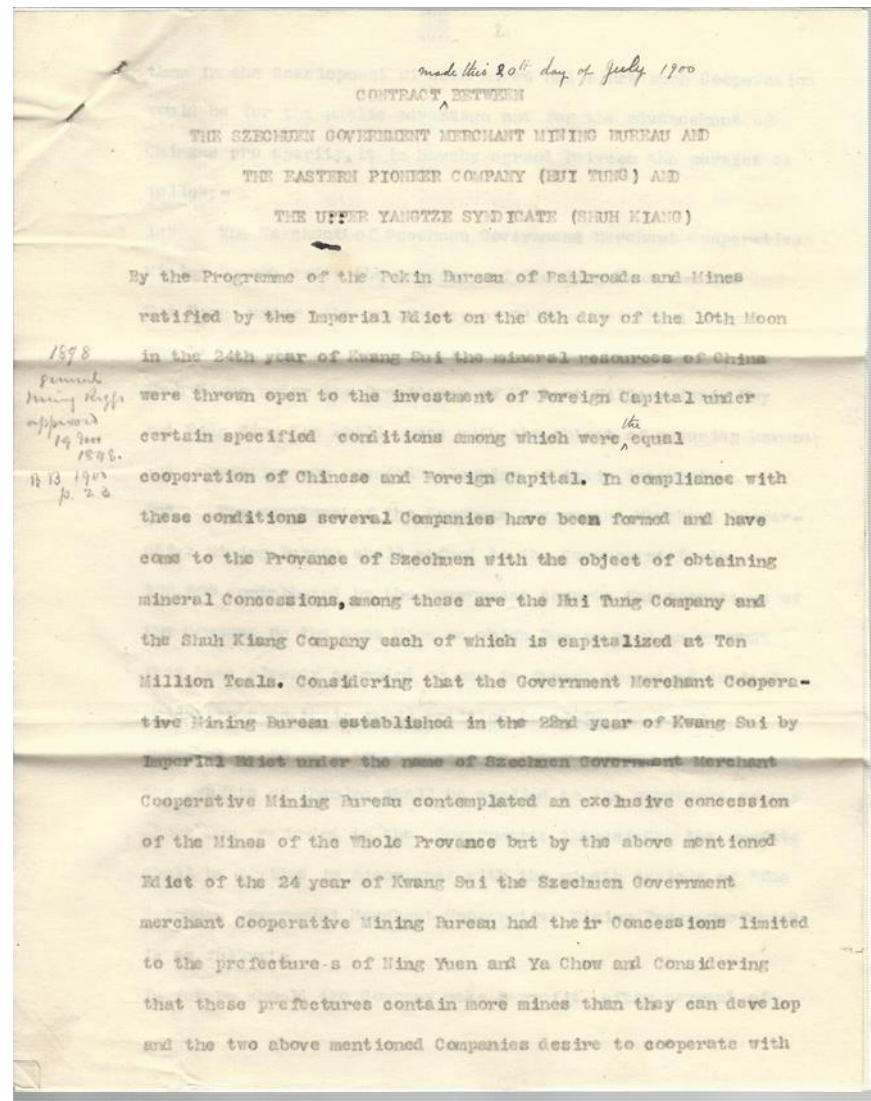
18th century, ink, color on gold on paper

- Poets naturalistic portraits
- Originally on handscrolls
- Heian Period waka style (Japanese 31 syllable poetry) before 13th century

The Archives, Special Collection, Art and Artifacts



Elling Eide in China



The Contract between Mr. Archibald Little and Chinese local government in Upper Yangtze
July, 1900

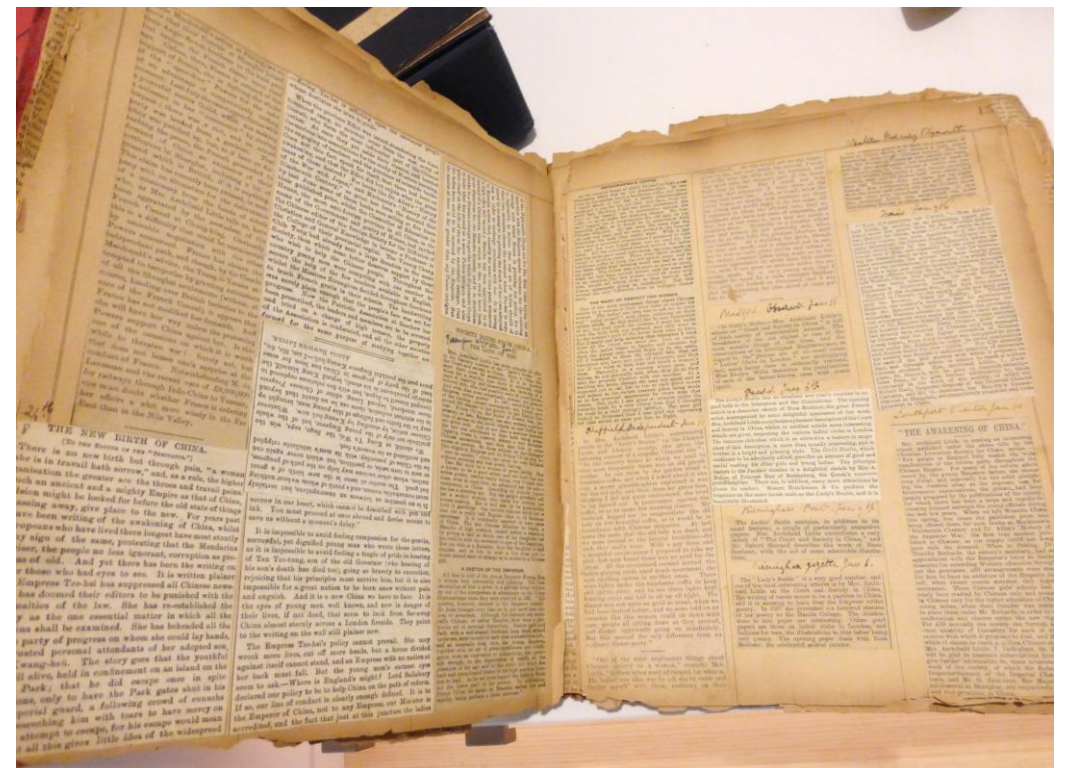


Foot-binding samples



The Contract to hire coolies
1875 (Guangxu 30)

Passport



Scrap



Chinese Hanging Scroll Depicting Li Bai Reclining
by Fan Zeng - 1979 (jiwei year) 20th century

- Has an inscription on it of a two sentence poem by Li Bai



Chinese Tang Tomb Sculpture of Lady
by Rockery

- Made during the Tang Dynasty



Vest: Chinese Summer Bamboo-Weave Vests

- Qing Dynasty, 19th Century
- Designed to be worn during hot weather to keep heavy robes away from the skin

Chinese Six-Panel Screen Portraying the Garden Gathering of Daoist Immortals and Mythical Beasts

- The section of the screen depicts scenes of the eight immortals approaching a garden where they would gather every 3,000 years for a peach blossom festival.



Persian Ceiling Mural for the New Year's Festival

- Made during the Qajar Dynasty- some time between 1779 and 1924.
- Depicts celebratory objects from the Persian New Year

The Surroundings



The Event

* Grand Opening October 2016

Series academic talks and community events

* Tang Society Conference November 2016

60+ scholars in Tang Studies

**Making Connections:
Contemporary Approaches
to the Tang Dynasty,
In Honor of the Opening
of the Elling O. Eide Library**

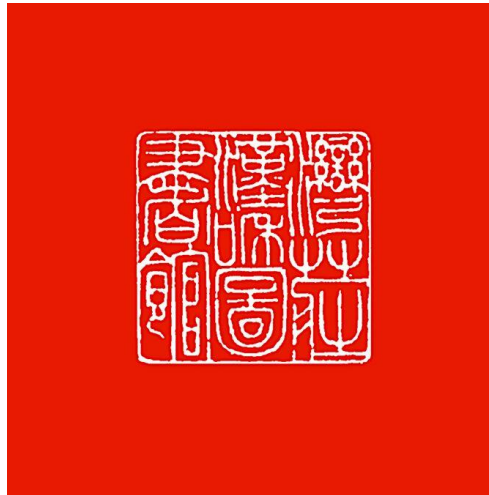
November 10-12, 2016
The Elling O. Eide Library, Sarasota Florida

The Tang Society is pleased to announce an international conference, co-sponsored by Tang Studies Society and University at Albany, to celebrate the opening of the Elling O. Eide Library.

The conference has three goals: (1) to bring together a wide range of scholars of the Tang to present papers in different disciplines, emphasizing new, emerging questions and interdisciplinary approaches; (2) to connect scholars of the Tang from different generations, from senior scholars to graduate students; and (3) to introduce the Eide Library and the Elling O. Eide Charitable Foundation to those scholars, showcasing its collection as an important new scholarly resource.

Information about the Elling O. Eide Charitable Foundation and the Elling O. Eide Library is available here: <http://www.ellingoeide.org/>

THANK YOU!



www.ellingoeide.org

8000 S. Tamiami Trail
Sarasota, Florida 34231

Tel: 941-921-4304
Email: mail@ellingoeide.org